

Okayama University ANPIC System Initial Setup Process

Department in charge:

Okayama University Safety and Health
Dept. Safety Div.
TEL: 086-251-8985, 7127
Email: i-kikaku@adm.okayama-u.ac.jp

- To use the ANPIC system, initial setup is necessary. Please follow the steps below to register your password.
- If you do not have an email address, you will receive a notification about the initial password from your respective department at Okayama University.
- For Okayama University Hospital faculty and staff, the University Safety and Health Department will provide the initial password in writing.

01

Access the initial registration website.

ANPIC initial registration website.



<https://anpic-v-okayama-u.jecc.jp/okayama-u/regist>

*Cell phones and smartphones that do not support SSL-encrypted communication will not be able to access the initial registration website above. Please access from a computer or smartphone that supports SSL-encrypted communication.

02

Enter your login ID (personal number) and tap [Next].
Your personal number is the number on your union membership card. (The first 8 digits of a 10-digit number.)

ANPIC初回登録サイトです。
ログインを行うとメールが送信されますので初期登録を実施してください。
When logging in, email will be sent so please perform initial registration.

ログインID (Login ID)

次へ(Next)

03

An initial registration email will be sent to the email address registered in advance with the ANPIC system.
Tap the link in the email.

件名：【岡山大学】ANPIC初期登録について
(Regarding ANPIC initial registration)

岡山大学 安否太郎様

以下のURLにアクセスし、パスワード、メールアドレスの登録・確認を実施してください。
(Please access the URL below to register your password and email address.)

ユーザ登録は、こちらから！
(For user registration, click here)

https://anpic-v-okayama-u.jecc.jp/*****
(有効期限：2時間)
(Link expires in 2 hours)

*The initial registration email is valid for 2 hours. If the email has expired, please start over from Step 1.

04

Enter your password by following the instructions on the personal information registration page. After reviewing the privacy policy, tap [Register].

パスワード及び、メールアドレスを登録してください。
Please register a password and an email address.

登録情報
Registration Information
ID: ab0123
名前: 安否太郎

パスワード
Password

パスワード(確認用)
Password (for confirmation)

メールアドレス1
Email address 1

メールアドレス2
Email address 2

メールアドレス3
Email address 3

メールアドレス3(確認用)
Email address 3 (for confirmation)

You can also register an additional email address

プライバシーポリシー (Privacy Policy)

同意 (I agree to the privacy policy and register)

05

A registration confirmation email will be sent from the ANPIC system. Tap the link in the email.

件名：【岡山大学】ANPIC 本登録について
(Regarding ANPIC full registration)

岡山大学 安否太郎様

以下のURLにアクセスし、本登録を実施してください。
(Please access the URL below to complete the full registration process.)

本登録は、こちらから！
(For full registration, click here)

https://anpic-v-okayama-u.jecc.jp/*****
(有効期限：2時間)
(Link expires in 2 hours)

*The registration confirmation email is valid for 2 hours. If the email has expired, please start over from Step 1.

06

When the registration completion page appears, the initial setup is complete. Navigate to the login page and bookmark it.

ユーザー情報の登録に成功しました。
ログイン画面からログインできることを確認してください。
Successful registration of user information.
Please confirm that you can login.

ログイン画面へ
Go to login page

Version 1.10.1
©2023 AvennedSystem

After completing the initial setup, to use the ANPIC system, please access the following ANPIC website and log in with your login ID and registered password.

Okayama University ANPIC website:
<https://anpic-v-okayama-u.jecc.jp/okayama-u>



How to Set Up the App/LINE

Okayama University ANPIC website:
<https://anpic-v-okayama-u.jecc.jp/okayama-u>



1. Install the app

*To receive notifications via LINE, you will still need to install the ANPIC app.



Search for "anpic," "アンピック," or "あんぴっく" in the App Store or Google Play, and install the ANPIC app.

(If the ANPIC app does not appear in the search results, please go to the ANPIC website (<https://www.anpic.jp>) and click on the "Download the free app here!" link at the bottom of the page to navigate to the installation page.)

Alternatively, log in to the ANPIC website with your own account and install the app from the "App Download" button within the "Account Settings" page.

2. Launch the app and log in

- (1) Tap the icon of the installed app to launch it.
- (2) After launching the app, if a message asking to enable push notifications is displayed, Tap "OK" or "許可 [permission]" to enable push notifications.
- (3) After receiving a message confirming the settings for automatic removal of the app's permissions, go to Settings on your device and make the necessary changes.

The steps and item names in Settings may differ depending on your device. For more details, please refer to the following "If you are not receiving notifications" website and check the "アプリ・LINE通知共通の確認項目[Common confirmation items for app and LINE notifications]" section.

- (4) a. Directly enter the link to the ANPIC website above.
 b. Tap the icon and scan the QR code to the same ANPIC website with your camera.

*When a message appears requesting permission to use your camera, grant permission.

- (5) Enter your login ID and password registered in the initial setup to log in.



3. Set up notification destination

To receive notifications via LINE (the LINE app must be installed)

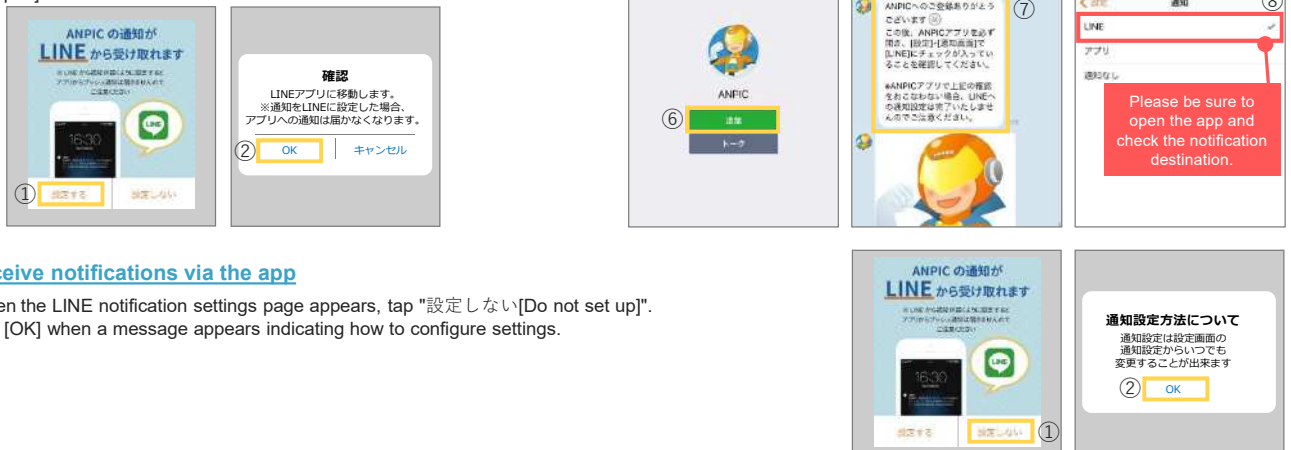
- (1) When the LINE notification settings page appears, tap "設定する [Set up]".
- (2) Tap [OK] when the confirmation message appears.
- (3) When the authentication page appears, tap "同意する [Agree]" or "許可 [Allow]".

[For iOS devices, the following steps may be necessary]

- (4) "このアプリを開きますか? [Do you want to open this app?]" is displayed, tap "確認 [Confirm]".
- (5) "ANPICで開きますか? [Do you want to open with 'ANPIC'?]" is displayed, tap "開く [Open]".

- (6) When the Add Friend page appears, tap "追加 [Add]".
- (7) Check the LINE chat page to make sure that you are receiving notifications.
- (8) Make sure to open the ANPIC app, go to "設定 [Settings]" -> "通知画面 [Notification Screen]", and make sure that [LINE] is checked. This completes the setup.

*Be sure not to delete the ANPIC app even after completing the setup.



To receive notifications via the app

- (1) When the LINE notification settings page appears, tap "設定しない [Do not set up]".
- (2) Tap [OK] when a message appears indicating how to configure settings.

If you are not receiving notifications:

• If you are not receiving notifications from the ANPIC system, please refer to the following website and check the relevant items: <https://www.anpic.jp/mailinfo/>

Attention/Notes:

- Do not delete the ANPIC app or log out, regardless of whether you wish to receive notifications via the app or LINE.
- We have prepared instructional videos on how to set up and use the ANPIC system and a Q&A website. You can access these by logging in to your account on the ANPIC website above, in the "関連サイトリンク集 [Related links]" section.

Safety Check-in Procedure

Tap the link in the message.



Tap the "Check-in" button.



Go to the check-in page

Answer the questions and tap "安否状況を報告する [Complete Safety Check-in]" to complete your check-in.

